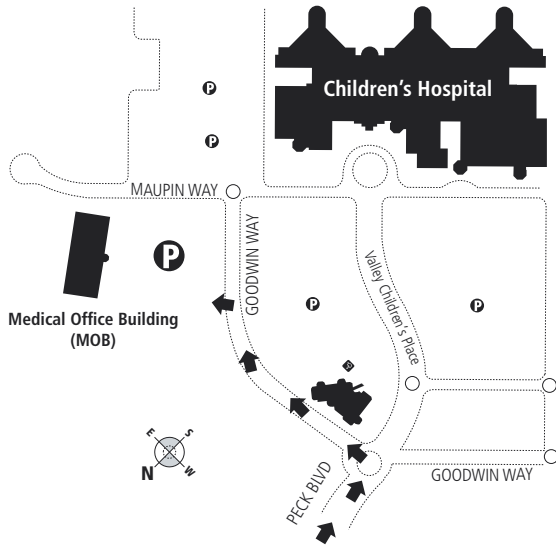


www.childrenscentralcal.org

9300 Valley Children's Place

Madera, CA 93636-8762

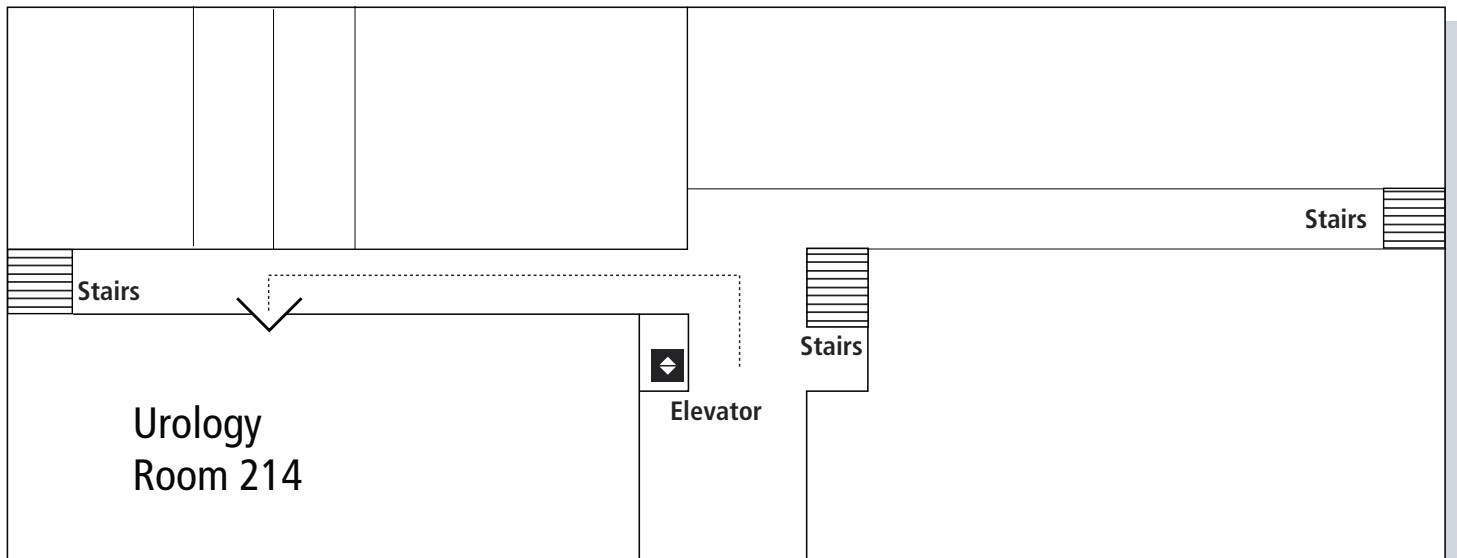
Practice Phone: **(559) 353-6195**



This is the Medical Office Building (MOB).

Go to the Medical Office Building (MOB) located north-east of the Hospital. It is on your left as you drive in.

2 Your appointment is on the **Second Floor** ↑



Enter the Medical Office Building (MOB) through the main entrance. Take the elevator or stairs to the second floor. Take the hallway on your left. The Urology Practice is on the left side of the hall.